



SEPT
2024



New parent's information



European School Brussel II



EEB2 Woluwe Nursery, primary and secondary



EEB2 Evere Nursery and primary

Central Enrolment Commission

Expansion due to growth in the Brussels schools population.

Management team



Kamila MALIK

- Director EEB2



Kristiina SIIMES

- Deputy Director
- Secondary



Kirsten MEEUS

- Assistant Deputy Director
- Secondary



Alexia GIANNAKOPOULOU

- Deputy Director
- Nursery & Primary WOL



Dré VAN GEEL

- Assistant Deputy Director
- Nursery & Primary WOL



Myriam LANCELOT

- Deputy Director
- Nursery & Primary EVE



Noel ROWLAND

- Assistant Deputy Director
- Nursery & Primary EVE

School's structure

	Age	Classes
Nursery	4-6 years	Mixed groups
Primary	6-11 years	Classes P1-P5
Secondary	11-18 years	Classes S1-S7



Language sections



	9 sections	Woluwé	Evere
DE	German-speaking section	√	√
EN	English-speaking section	√	√
FI	Finnish section	√	
FR	French-speaking section	√	√
IT	Italian section	√	√
LT	Lithuanian section	√	
NL	Dutch-speaking section	√	
PT	Portuguese section	√	
SV	Swedish section	√	

Choice of section

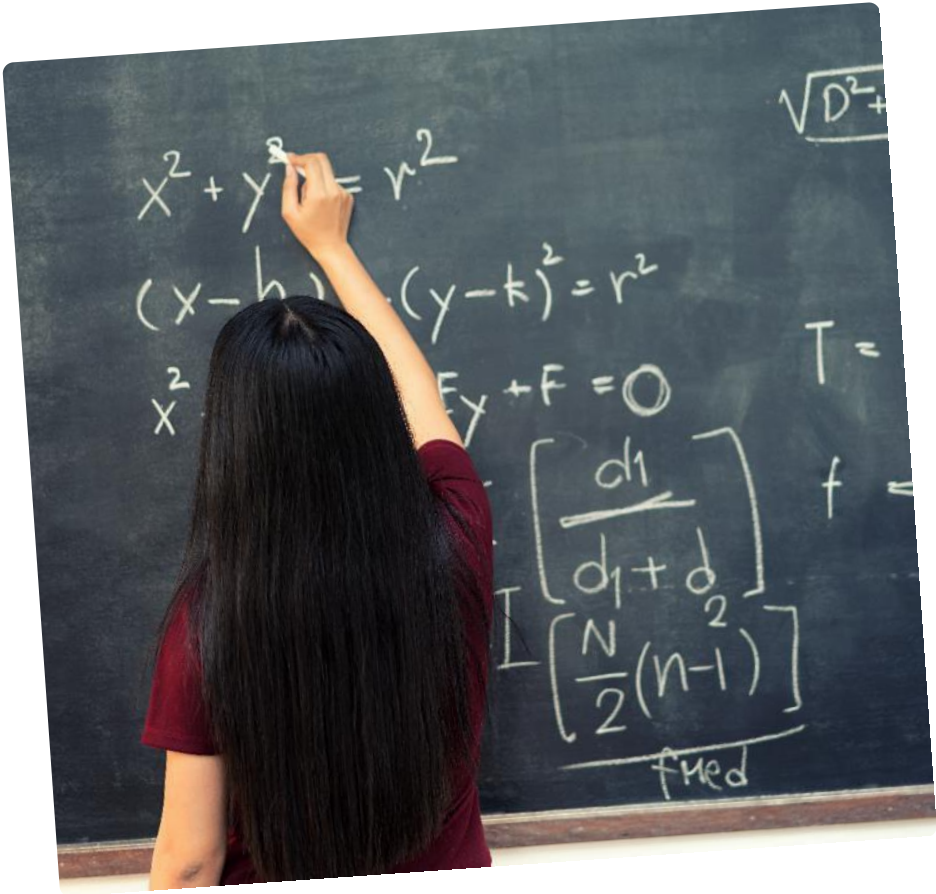
Education in the mother tongue or dominant language

Based on the pupil's background and the parents' ability to support the child in the language of the section



Number of pupils

	Woluwé	Evere
Nursery	+/- 110	+/- 165
Primary	+/- 750	+/- 615
Secondary	+/- 2200	



Canteen & transport

Canteen & Transport organized by the Parents' association (APEEE)



Medical service

School doctor

3 nurses in Woluwe,
1 nurse in Evere

Medical interventions

Regular medical check-up



Educational support

- General
- Moderate
- Intensive

[More info](#)

In cooperation with parents



Pupils' well-being

Primary

- Care Team
- School Psychologist
- Living together & Quiet Room project

Secondary

- Guidance Team
- School psychologists
- 8 life skills
- Learn to plan projects
- Social skills



Projects / Events

Book Week

Art exhibition

Eco-project

Footfest

Workshops

School trips

School garden

Sports day

Subject-related outings

Grand Debates

School concerts

And many others !



School Libraries

Books in all section languages

Primary

- Weekly visits
- Several activities during the year



Secondary

- Multimedia center
- Copy options
- Free entrance during free periods
- Silent study room



Nursery school

EARLY LEARNING CURRICULUM

- Me and my body
- Me as a person
- Me and the others
- Me and the world





Primary school

Woluwe - Evere

Subjects

- Mathematics
- L1
- L2
- Discovery of the World
- European Hours (from P3)
- Sports
- Music
- Art
- Ethics/Religion



L1 programmes



Based on programme developments in the home country;
national inspectors;
ES curriculum;
www.eursc.eu



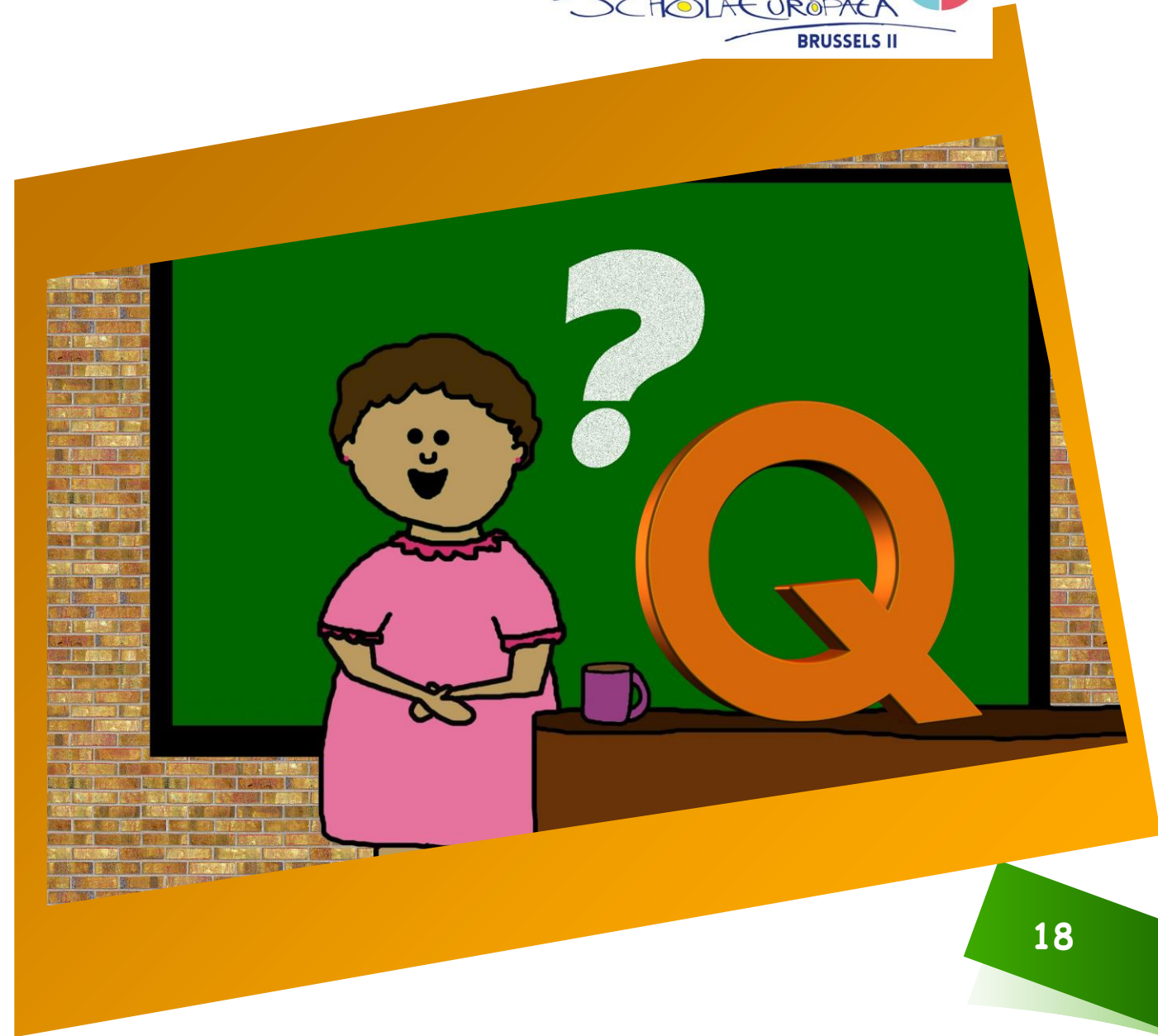
Choice of L2

French, English or German

Important for the future (secondary)

Choice is definitive

Parents' ability to support the learning

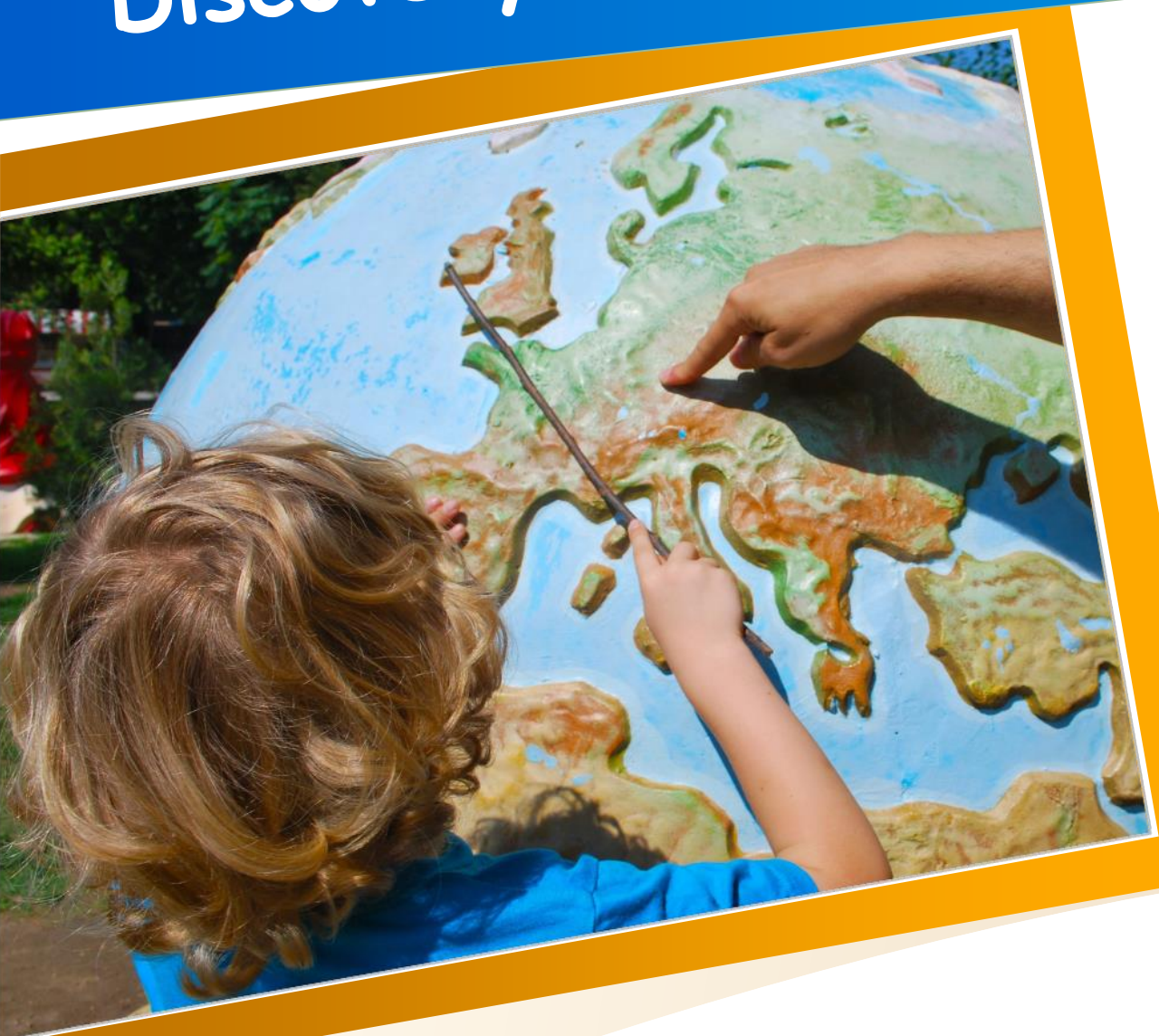


Mathematics

- Harmonised syllabus across the sections
- Harmonised material: Intermath
- Matific



Discovery of the world



- Harmonised syllabus
- Common daily school trips related to the syllabus
- Cooperation between sections

European Hours



- 90 minutes per week (P3, P4, P5)
- Organised in the second language
- Different activities in rotation system

Sport

- Sports in school (Nursery, P1-P2)
- Sports in Woluwe Sport – NATO facilities (P3-P4-P5)
- Swimming (WOL P1-P2, EVE P1-P5)
- Specialised sports / swimming teachers



Religion / Moral



- Choice of a Religion / Morale group
- Organised in the section language if at least 7 pupils

Assessment

- Oral school report in November
- School reports in February and July
- Portfolio
- Teacher-Parents contact



Transition

Nursery – Primary

Primary – Secondary

Mr. Fabio Russo, Transition Coordinator Primary –
Secondary

Different activities for a good
transition





Secondary school

Woluwe

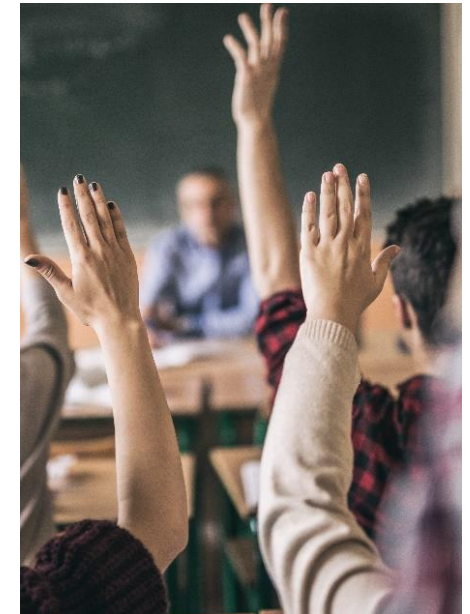
Timetables

- From 8:30 - 16:10 (9th period)
- Wednesdays 8:30 - 12:50 (S1 – S4)
- Number of periods per week:
min 33 – max 35
 - ❖ 1 period = 45 minutes
 - ❖ One break of 20 min. (10:55 – 11:15)
 - ❖ Lunch time (12:05 – 13:40)

MON HORAIRE / MY TIMETABLE		Lundi Monday	Mardi Tuesday	Mercredi Wednesday	Jeudi Thursday	Vendredi Friday
P1	8:30-9:15					
P2	9:20-10:05					
P3	10:10-10:55					
P4	11:15-12:00					
		Petite pause / Little break				
P5	12:05-12:50					
		Lunch S1-S2				
P6	12:55-13:40					
		Lunch S3-S7				
P7	13:45-14:30					
P8	14:35-15:20					
P9	15:25-16:10					

Subjects taught in L1

Subject	Years
Mathematics	S1-S7
Human Sciences	S1-S2
Integrated Science	S1-S3
BIO, CHE, PHY	S4-S5
ICT / Religion / Ethics	S1-S2



Importance of L2

Subject	Years
Human Sciences	From S3
Religion, Ethics	From S3
Geography	From S4
History	From S4
Economy	From S4
Sociology	From S4
...	



Pedagogical continuity of L2 from P1 to S7 (BAC, 12 years)

No changes are envisaged in language choices, except on entry to year S6.

Introduction L3

2 periods in S1: This is a **beginner's course** and the choice is made in P5.

A minimum of 7 students is required to create a L3 course.

No changes are envisaged in language choices, except on entry to year S6.

-  German
-  Italian
-  Dutch
-  French
-  Portuguese
-  Spanish
-  English
-  Another European language



Optional subjects

Year	Subject
S1	No optional subject
S2	Latin (2 periods)
S3	ICT (if no Latin)
S4-S7	ICT, L4, L5, Eco, Latin, Music, Art, Sociology, Labs, ...
	ONL (Other National Language): Irish: for Irish students in Anglophone Sec. Finnish: for Finnish students in SV Sec. Swedish: for Swedish students in FI Sec.



LATIN

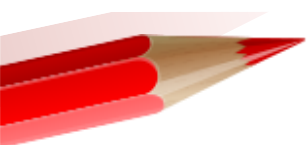


Contact parents-school

- Website (general information brochure)
- Mail
- SMS
- Extranet
- School planner (P5 + Secondary)



Parents' representatives



Admin Board
Education Boards
Health and Safety Board

www.woluweparents.org



Apeee Woluwe
Evere

The 'Apeee' logo is written in a large, black, handwritten-style font. To its right is a semi-circle of seven colorful stars (blue, red, purple, green, purple, red, blue). Below the stars, the words 'Woluwe' and 'Evere' are stacked in a black, sans-serif font.



Thank You!

www.eeb2.be
www.eurisc.eu
www.woluweparents.org